

TIMBER PANEL RANGE

Wellington Architectural specialises in the manufacture of 'design-flexible' pre-fabricated timber cladding panels. Our panels feature concealed fixings which provide a seamless finish with fast installation and reduced waste.

Our timber panel range contains a range of panel designs which are customisable and available in a range of timbers and finish options, customised to suit your project.

Below we provide details on the following panels:

- Epsilon Panel
- Alpha Panel
- Omega Panel
- Gamma Panel
- Delta Panel

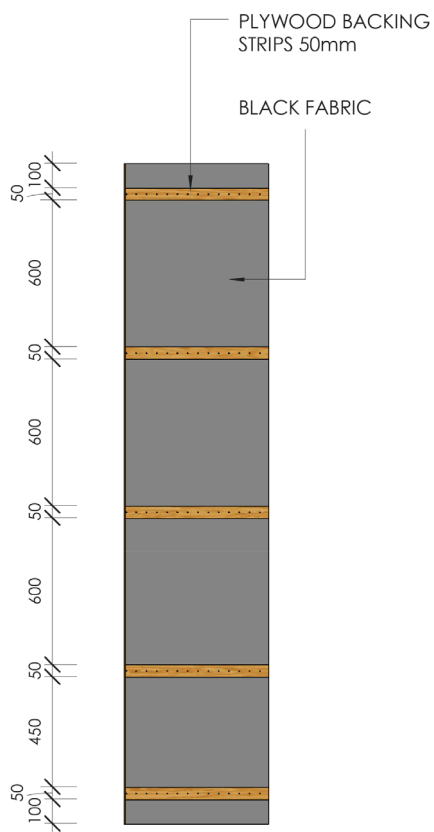
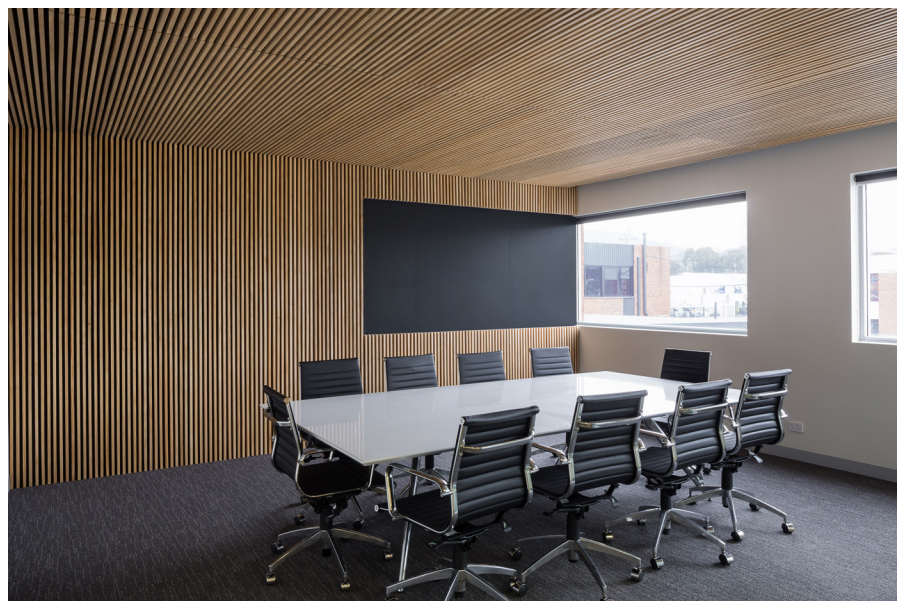
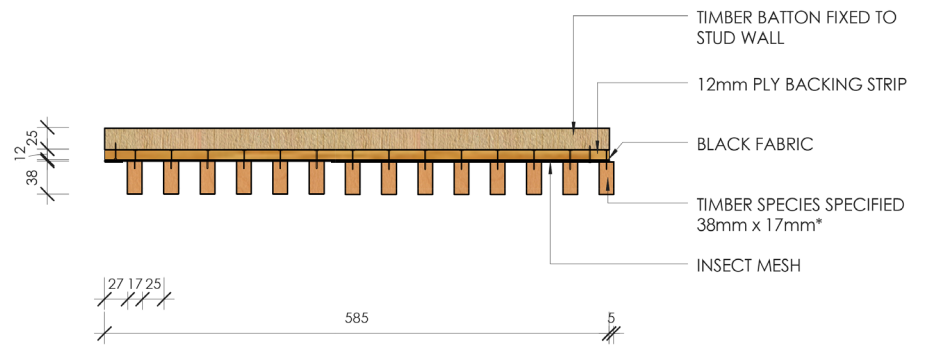
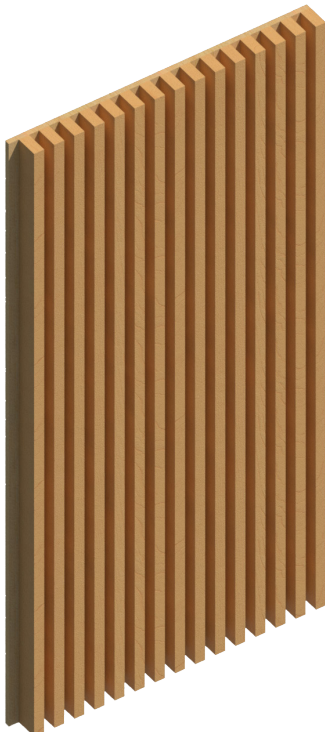
While these are our most popular panel designs, any design can be modified to suit the specific project.

The pricing for our timber panel range varies based on the complexity of the design and amount of timber required to produce each panel.

Alpha Panel ↑ \$
Epsilon Panel
Omega Panel
Gamma Panel ↓ \$\$\$
Delta Panel

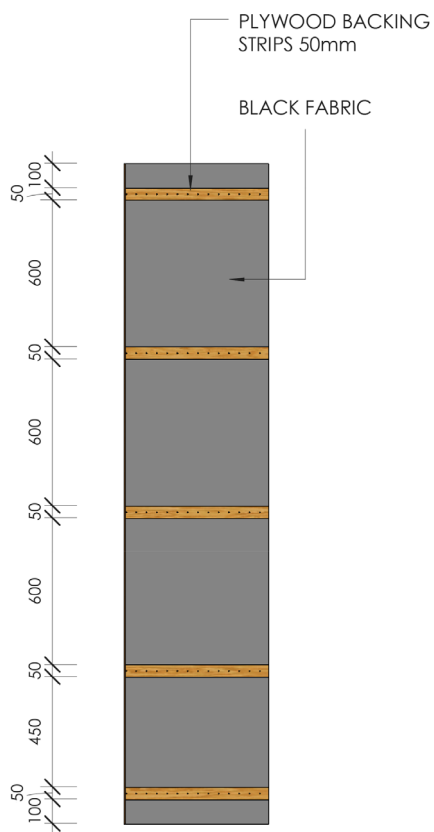
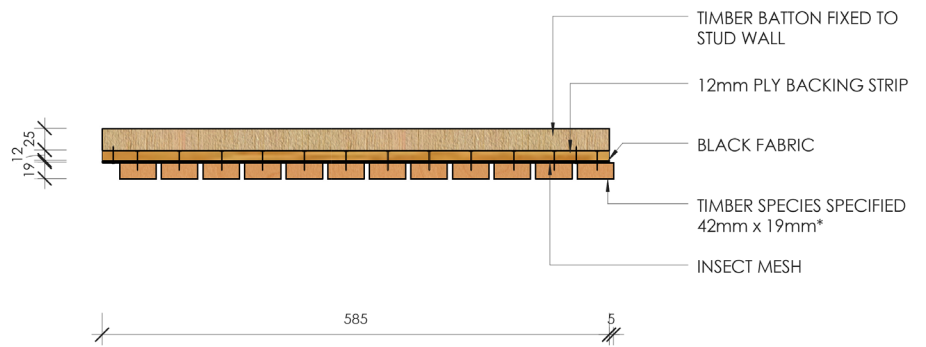
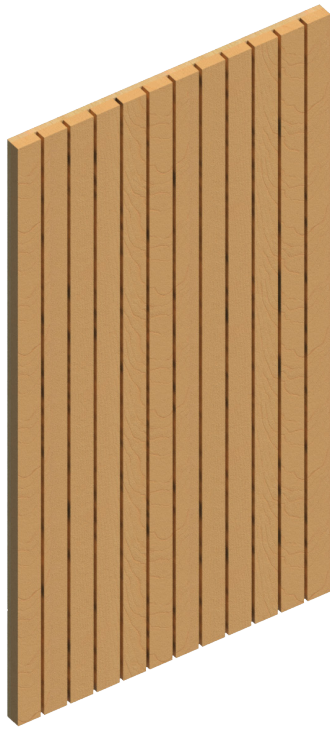


Epsilon Panel



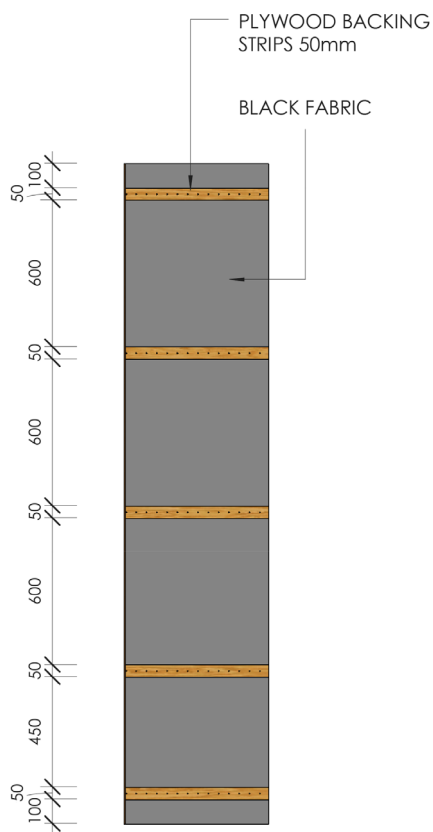
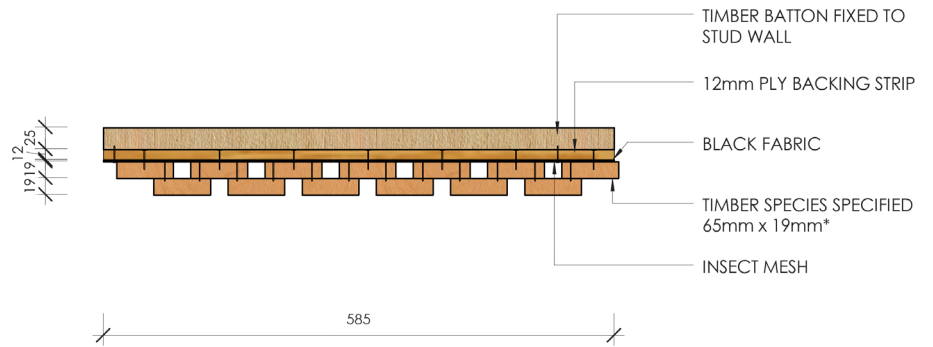
Phillip Office
Timber: Premium Pine
Finish: Cutek Oil in Smokey Grey

Alpha Panel



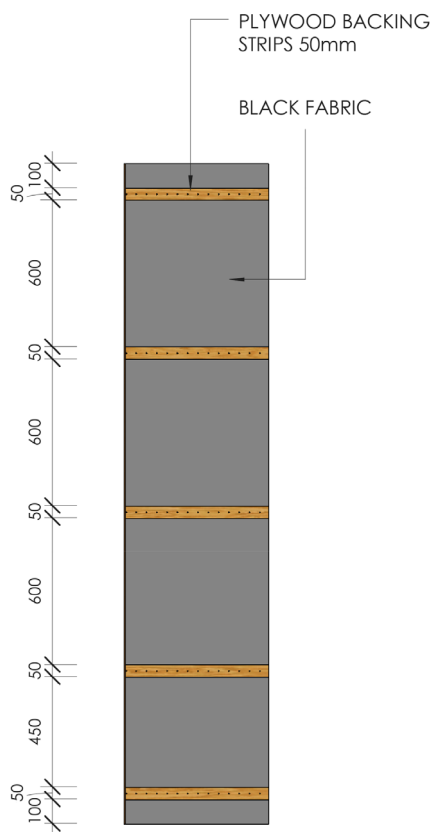
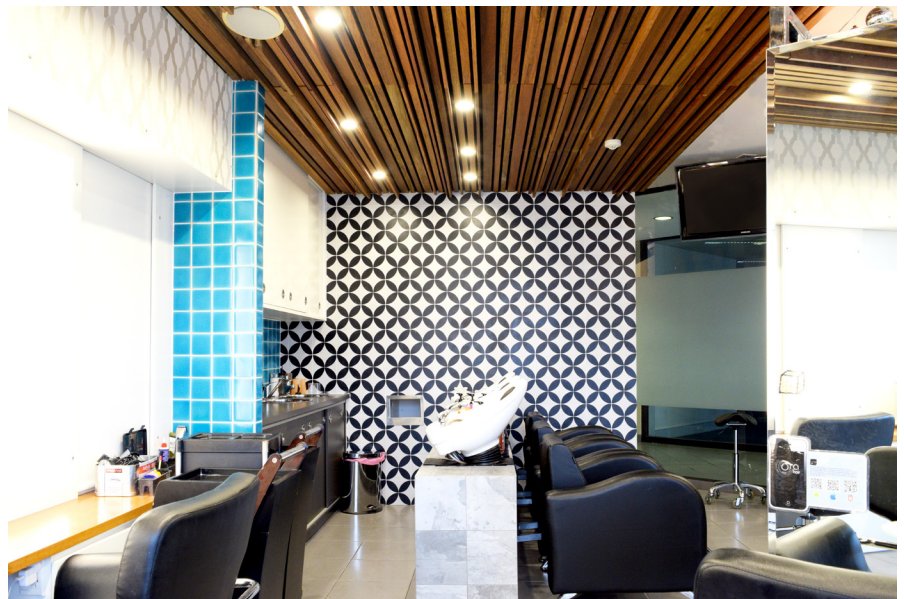
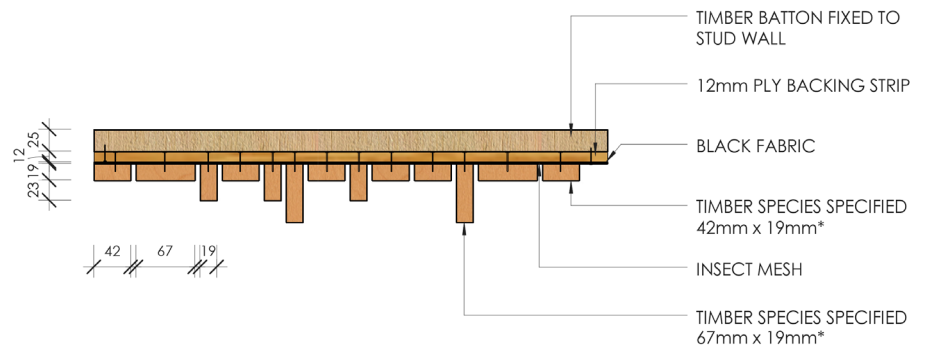
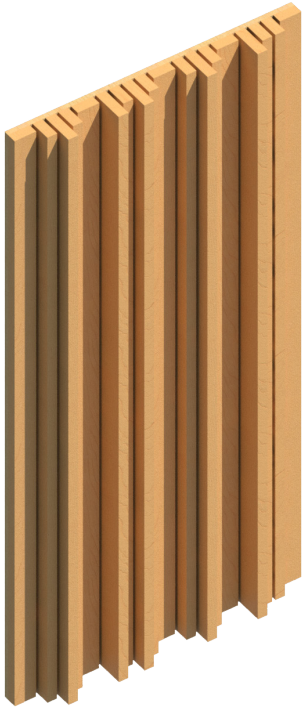
XO Restaurant
Timber: Victorian Ash
Finish: Clear Cutek Oil

Omega Panel



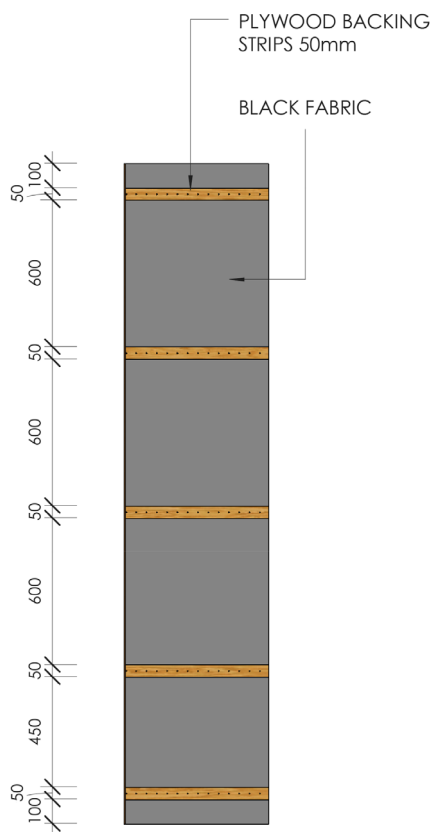
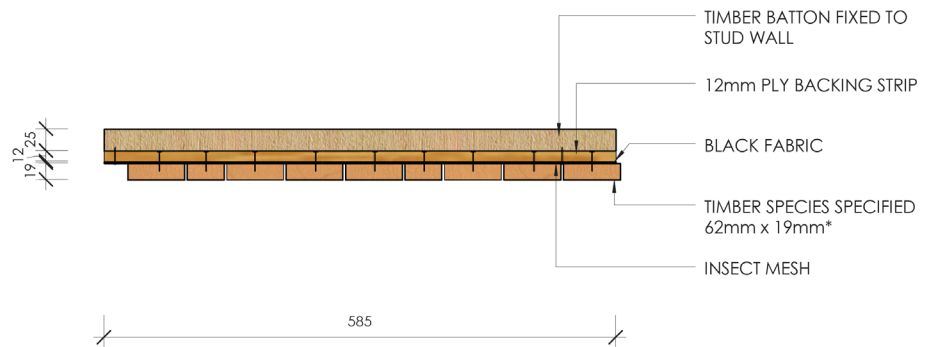
25 National Circuit
Timber: Spotted Gum
Finish: Clear Lacquer

Gamma Panel



Ora Hair Salon
Timber: Spotted Gum
Finish: Clear Cutek Oil

Delta Panel



Wright Residence
Timber: Spotted Gum
Finish: Clear Cutek Oil