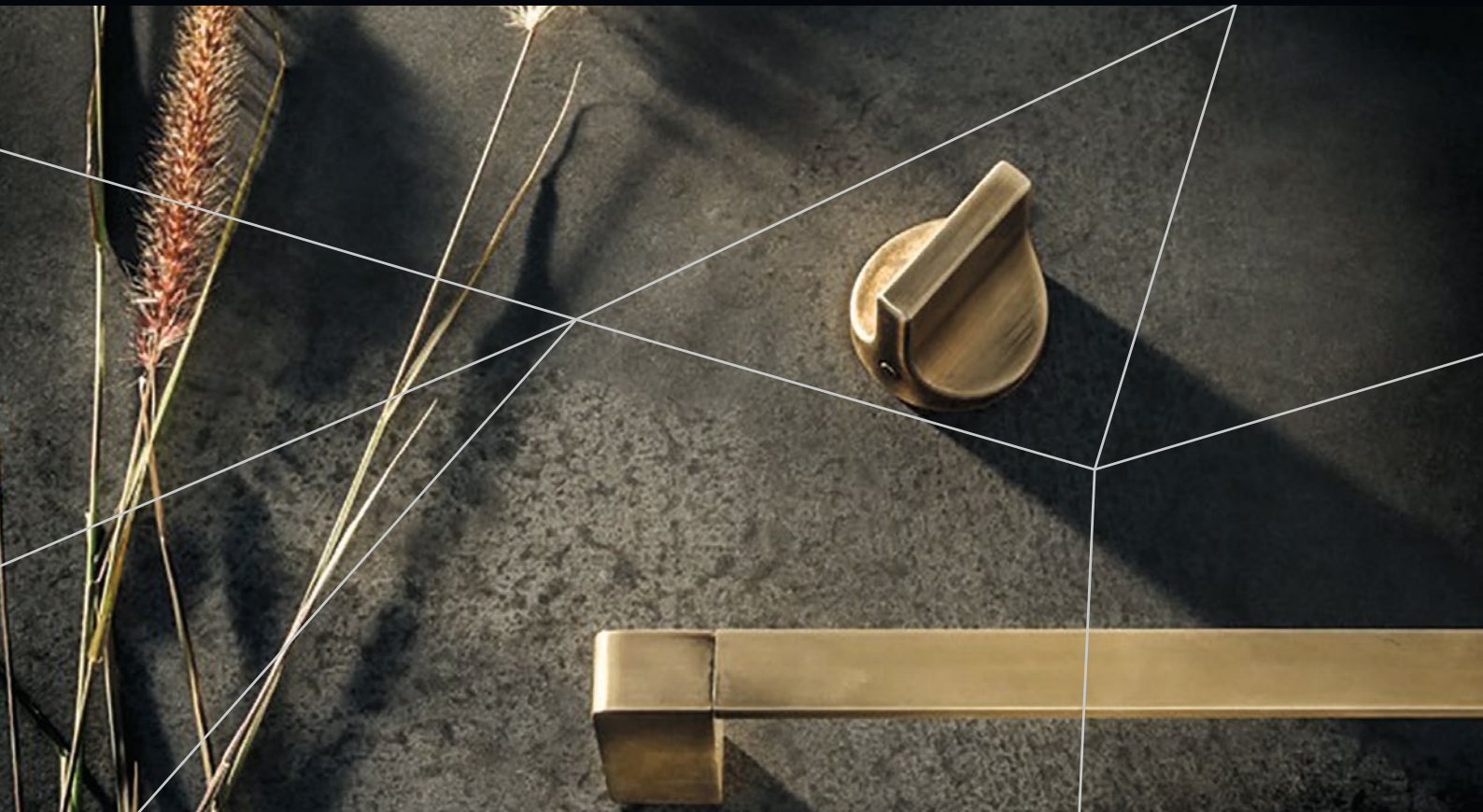


FAIRVIEW

DEFINING ARCHITECTURE SINCE 1963



COLOUR CHART

METAL FINISHES

FAIRVIEW COLOUR INSPIRATION PRODUCT RANGE

Fairview is proud to provide a stunning collection of colours, inspired by items that have meaning, value and appeal.

The colour chart applies to:

- Vitracore G2
- Vitrabond
- Vitradual

FAIRVIEW PREFINISHED FAÇADE SOLUTIONS

Fairview specialises in the design, manufacture and distribution of a suite of quality façade solutions throughout Australia, North America and the United Kingdom.

With almost 30 years' experience in the façade industry, Fairview is dedicated to consistently facilitating the successful delivery of innovative façades that meet the requirements and vision of each project.

With one of the largest stock holds in Australia, we have the ability to ensure a consistent and timely supply to our dedicated installer network. In addition to this, our flexible and innovative approach allows us to work closely with our clients to deliver the best possible project outcomes.

Our suite of façade products and solutions includes:

- Vitrabond
- Vitracore G2
- Vitradual
- Ceramapanel
- Argeton
- VitraArt
- Equitone
- Trimo
- QBiss One
- Vitranamel







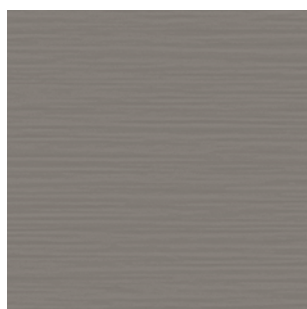
NATURALINE INSPIRED BY ELEMENTS

Natural metal finishes are significantly increasing in popularity and being widely used in many applications in the building industry, generally to magnify rather than diminish the appearance of any imperfections.

Elements are chemically the simplest substances and hence cannot be broken down using chemical methods. Elements can only be changed into other elements using nuclear methods. Some elements have been known for thousands of years, and who originally discovered them remains a mystery...

Fairview have produced a selection consisting of natural metals as well as imitation finishes, distinctive enough to provide a generous palette of colours to compliment the final appeal of your product and project, so the ability to mix 'n match becomes very easy.

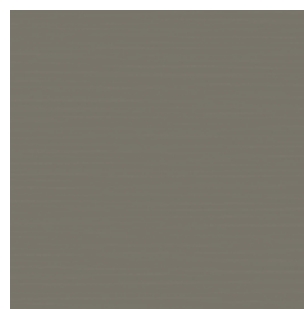
AUTHENTIC



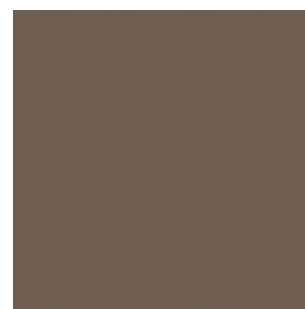
Glacier Grey Zinc
5700



Smokey Blue Zinc
5400



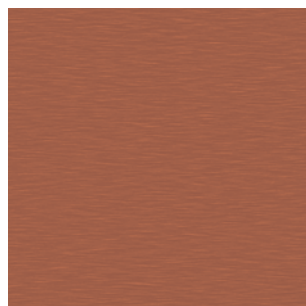
Gannett Green Zinc
5500



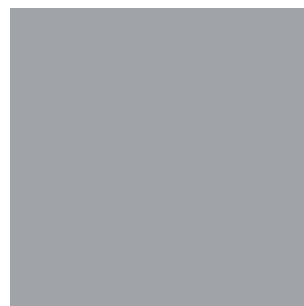
Sonoma Red Zinc
5650



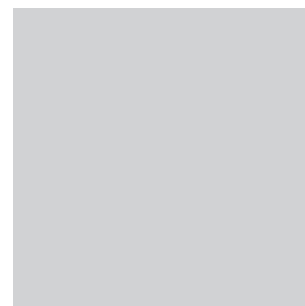
Onyx Black Zinc
5280



Natural Copper
5160



Stainless Steel
Opaque 5755



Stainless Steel
Mirror 5800



Disclaimer: Please note that size restrictions may apply to finishes listed with no MOQ's, and thus could still be affected by lead times.

Colours shown are as accurate as possible, however due to the limitations of the printing process and lighting changes we recommend requesting a production sample.



THE STRAND AT COOLANGATTA

NATURAL COPPER 5160, ANODISED MIRROR 5720

LOCATION: Coolangatta, QLD
 ARCHITECT: The Buchan Group
 BUILDER: Amisco
 PRODUCT: Vitrabond/FR

The Buchan Group were tasked with giving a \$60 million facelift to The Strand – formerly known as Showcase on the Beach – to help put the shopping precinct back on Coolangatta’s retail map in one of Queensland’s most iconic beachside destinations.

A standout feature of the design is the unique glass-louvered façade running the length of the building, which maximises visual access and acts as the centre’s focal point. Vitrabond/FR was utilised for the project and made The Buchan Group’s vision for the external façade a reality.



Stainless Steel
 Longline 5840



✓ No minimum order quantity required. △ Minimum order quantity required. G Gloss. G2 Not available on G2.



SYNTHETIC



Zinc Light
5790



Zinc Dark
5220



Zinc Charcoal
5260



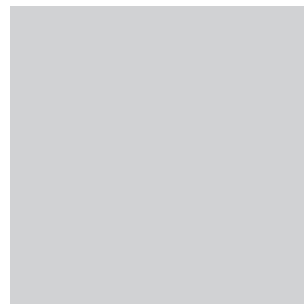
Zinc Blush
5600



Corten
5360



Anodised Clear
5860



Anodised Mirror
5801



Anodised Brush
5845



Disclaimer: Please note that size restrictions may apply to finishes listed with no MOQ's, and thus could still be affected by lead times.
Colours shown are as accurate as possible, however due to the limitations of the printing process and lighting changes we recommend requesting a production sample.



CARRARA GARDENS ANODISED MIRROR 5720 AND SILVER METALLIC 9601

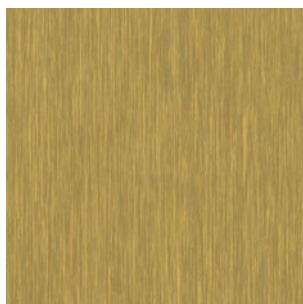
LOCATION: Nerang, Gold Coast
ARCHITECT: Shiro Architects
BUILDER: Alder Constructions
PRODUCT: Vitrabond

Fairview were chosen to supply Vitrabond composite panels for the \$20 million project overhaul of the existing Carrara Gardens Golf Course facility to create a world-class, state of the art, one-stop sporting complex on the Gold Coast, using the latest technology available for professional sports people.

The 12-hectare Carrara Gardens site has been built to be operationally friendly and as open and transparent as possible and is expected to be the host venue for the opening and closing ceremonies for the Gold Coast 2018 Commonwealth Games.



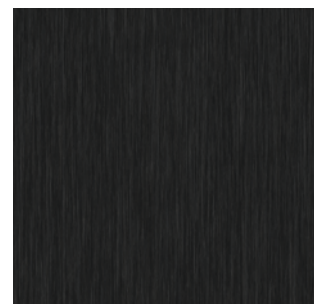
Brushed Copper
5150 ✓



Brushed Gold
2100 △



Brushed Silver
2200 ✓



Brushed Black
2295 ✓

✓ No minimum order quantity required. △ Minimum order quantity required. G Gloss. ~~G2~~ Not available on G2.



FAIRVIEW

DEFINING ARCHITECTURE SINCE 1963

AUSTRALASIA

P / +61 2 6352 2355

helpdesk@fv.com.au

NORTH AMERICA

P / +1 860 242 2711

helpdesk.na@fv.com.au

UNITED KINGDOM

P / +0844 800 7131

helpdesk.uk@fv.com.au

WWW.FV.COM.AU