



PRODUCT INTRODUCTION



vitradual™

NON-COMBUSTIBLE CASSETTE CLADDING / MANUFACTURED BY FAIRVIEW



vitradual™

NON-COMBUSTIBLE CASSETTE CLADDING / MANUFACTURED BY FAIRVIEW

ABOUT VITRADUAL

Vitradual is a 3mm non-combustible solid aluminium cassette cladding system that forms part of Fairview's range of BCA compliant, non-combustible cladding solutions.

Vitradual is a durable, high impact resistant, solid panel which can be curved and rolled. It features the same PVDF coating system as Fairview's Vitracore G2; well proven for its superior quality, extensive colour range and integrity; unlike traditional 3mm powder-coated aluminium.

Vitradual panels are prefinished and the flexibility of the PVDF coating means that they do not require fabrication prior to coating unlike traditional powdercoated cassettes, which minimises lead-times, damage and costs.

KEY FEATURES



NON-COMBUSTIBLE

Vitradual is AS1530.1 certified non-combustible.



HIGH DURABILITY

Vitradual panels are highly durable and impact resistant. They can be used effectively in high traffic areas.



LIGHTWEIGHT

Vitradual is incredibly rigid and lightweight and is therefore also easy to install.



PAINT SYSTEM

Vitradual only uses the highly recognised PVDF KYNAR 500 or FEVE paints known for their high durability, providing the optimum resistance to weather and industrial pollutants.



VERSATILE

Vitradual can be custom designed into a wide range of shapes and dimensions as well as able to be perforated or curved in some applications making it a versatile design choice.



CONCEALED FIX SYSTEM

Vitradual is the same to fabricate and install as traditional ACP by CNC routing panels into the concealed fix z-angle cassette system.



WARRANTY

Vitradual has up to a 15 year warranty when installed by a licensed installer.





vitradual™

NON-COMBUSTIBLE CASSETTE CLADDING / MANUFACTURED BY FAIRVIEW

FIRE RESISTANCE

In today's Architecture, it is the technical details, as well as the appearance that count; such as sustainability, thermal insulation, and fire protection.

Vitradual is one of the few large format cladding panels that are non-combustible when tested to AS1530.1.

Visually, Vitradual is similar to traditional composite panel, however what makes it different is the fact that it is constructed from 100% aluminium, rather than combustible material such as polyethylene and fire rated mineral. This makes Vitradual an ideal product for all applications where non-combustible panels are required; such as high-rise buildings, schools or hospitals.

As with all building products, the use of Vitradual must be authorised by the regulatory body.

The Fire Resistance standards achieved with standard Vitradual are as follows:

VITRADUAL			
TEST STANDARD	RESULT		
AS1530.1	NON-COMBUSTIBLE		
AS1530.3	PASS	Ignitability Index	0
	PASS	Heat Evolved	0
	PASS	Spread of Flame	0
	PASS	Smoke Developed	1

APPLICATIONS

Vitradual is an ideal cladding solution for infrastructure projects such as schools and hospitals as it is high impact resistant as well as being BCA compliant, non-combustible. The PVDF coating system also adds a superior finish which provides optimum resistance to weather and industrial pollutants.





vitradual[™]

NON-COMBUSTIBLE CASSETTE CLADDING / MANUFACTURED BY FAIRVIEW

MANUFACTURING QUALITY

A dedication to the total fulfillment of our client's and customer's expectations is reflected by a complete quality control system, beginning at the point of specification and continuing through to delivery of the guaranteed products. All activities are carried out in a manner which:

- Uses the framework of ISO9000 Quality Standards to verify the quality of our systems
- Ensures that our products and services are of the highest standards
- Create continuous improvements to our product through the application of the best quality practices.

ACCEPTANCE VARIATION

WIDTH	±2.0 mm
LENGTH	±4.0 mm
THICKNESS	±2% for 3 mm
BOW MAXIMUM	0.5% of the length and/or width
SQUARENESS MAXIMUM	5.0 mm
SURFACE DEFECTS	The surface shall not have any irregularities such as dents, scratches and other imperfections in accordance with our quality assurance

WARRANTY

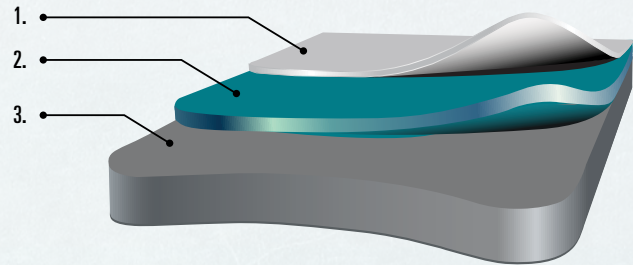
The standard warranty is up to 15 years, subject to terms and conditions, with longer warranties available on a project specific basis.



TYPICAL COMPOSITION

1. Protective film
2. PVDF-Kynar 500 coating system
3. 3mm Aluminium

The material is rigid, resistant to blows, breakage and pressure, and has high bending, buckling and breaking strengths.



DIMENSIONS

WIDTH	LENGTH	THICKNESS
1250 / 1500	2500	3mm
	3200	
	4000	
CUSTOM SIZES ARE AVAILABLE, PLEASE SPEAK TO THE FAIRVIEW TEAM		

* May not be available in all finishes.

WEIGHT

THICKNESS	WEIGHT (kg/m ²)
3mm	8.1



vitradual™

NON-COMBUSTIBLE CASSETTE CLADDING / MANUFACTURED BY FAIRVIEW

TECHNICAL DATA

CLASSIFICATION	TEST STANDARD	UNIT	VITRADUAL
PANEL WEIGHT		[kg/m ²]	8.1
THICKNESS		[mm]	3
THICKNESS OF ALUMINIUM FACE		[mm]	3
WIDTH		[mm]	1250
ALUMINIUM SKIN			
ALLOY OF AUMINIUM			Minimum 3000 series
SURFACE PROPERTIES (PVDF COATINGS)			
DRY FILM THICKNESS (NOMINAL)	ASTM D1400		0.20-0.30 mil primer 0.70-0.80 mil topcoat
GLOSS	ASTM D523		Standard @ 60°: 25-35 Durandar LG @ 85°: <10
PENCIL HARDNESS	ASTM D3363		F-2H
FLEXIBILITY	T-Bend, ASTM D4145		0-2 T-Bend; No pick-off
ADHESION	ASTM D3359 Reverse Impact 1/16' crosshatch		No adhesion loss
REVERSE IMPACT	ASTM D2794		1.5 x Metal thickness (aluminium): No cracking or adhesion loss
ACID RESISTANCE	ASTM D1308		10% Muriatic acid - 24 hrs: No effect
ACID RAIN TEST	Kesternich SO ₂ , DIN 50018		15 Cycles min. No objectionable colour change
ALKALI RESISTANCE	ASTM D1308 10%, 25%, NaOH, 1 hr.		No effect
SALT SPRAY RESISTANCE	ASTM B117 5% salt fog @ 95°F		Passes 4000 hrs. Less than 1/1' avg. creepage from scribe; None or few #8 blisters
HUMIDITY RESISTANCE	ASTM D714 ASTM D2247 100% relative humidity @ 95°F		Passes 4000 hrs. No #8 blisters
EXTERIOR EXPOSURE	10 yrs. @ 45°, South Florida ASTM D2244/ASTM D4214		Max. 5 fade Max. 8 chalk





vitradual™

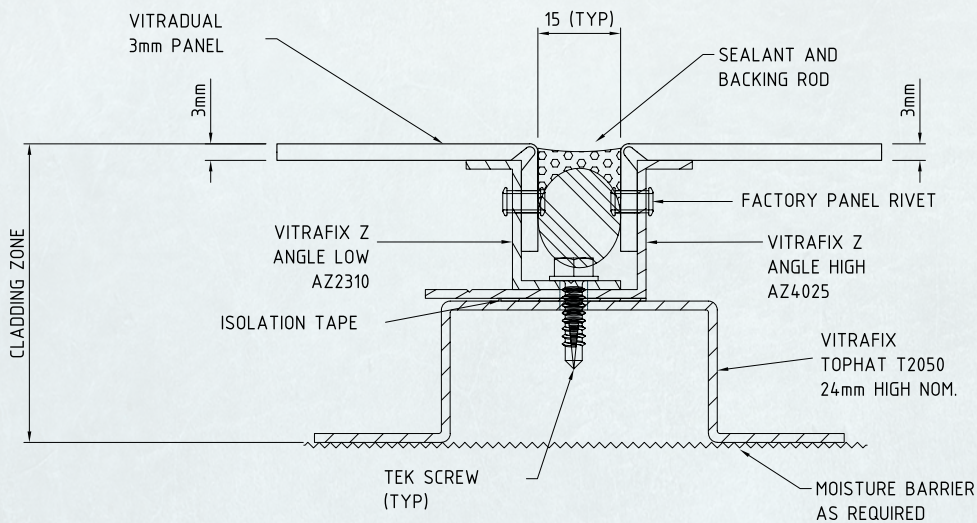
NON-COMBUSTIBLE CASSETTE CLADDING / MANUFACTURED BY FAIRVIEW

FINISH

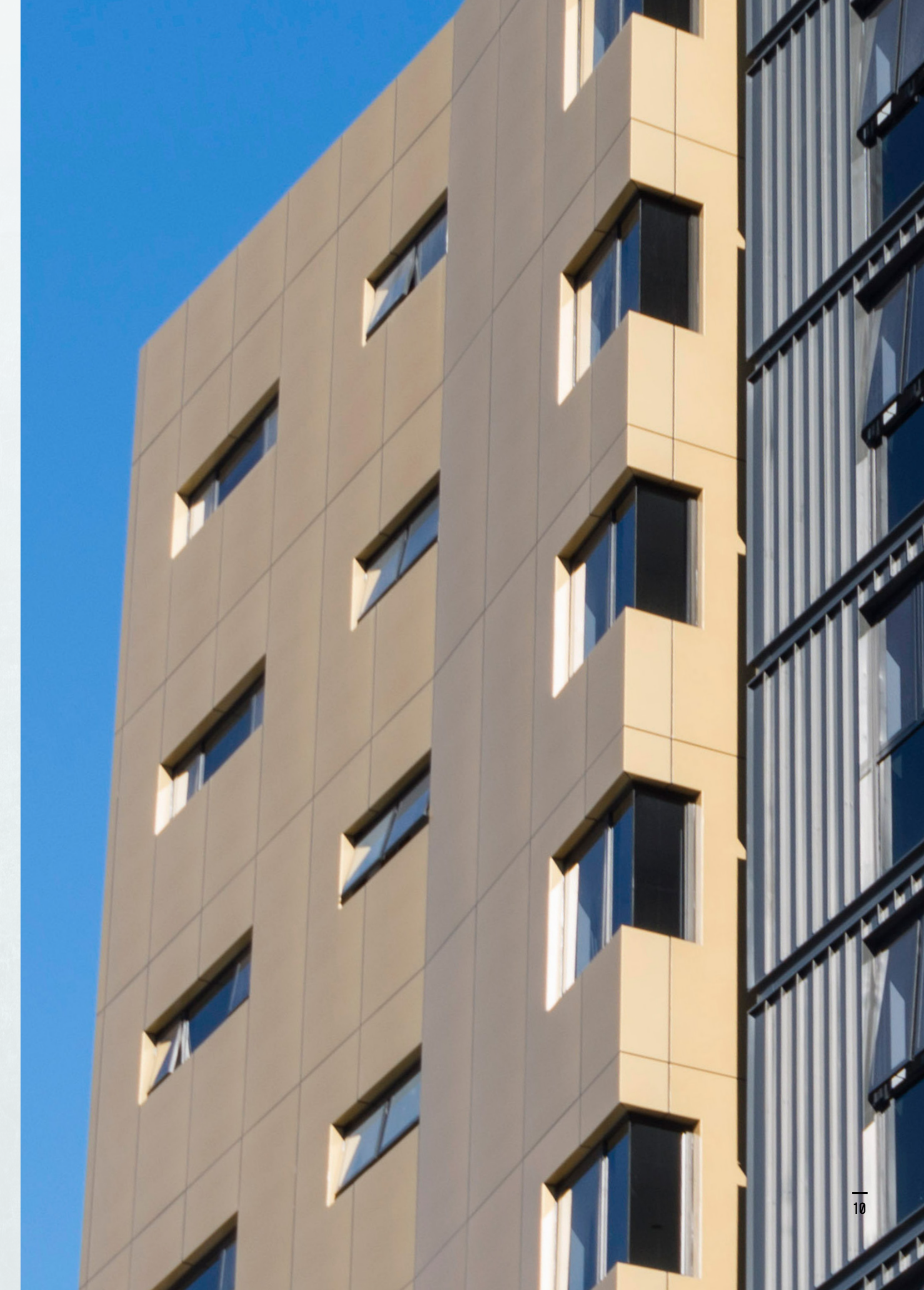
Vitradual uses only the highly recognised PVDF KYNAR 500 or FEVE paints known for their high durability. These premium paints provide an optimum resistance to weather and industrial pollution. More than 50 years of South Florida Exposure Testing is continuing to confirm the superior chemical and physical properties of fluoropolymer coatings.

Vitradual has virtually unlimited colour range and we are able to match almost any panel finish.

FIXING SYSTEM



For more details, please refer to the Vitradual Installation Manual



VERSION 2.2



FAIRVIEW™

DEFINING ARCHITECTURE SINCE 1969

AUSTRALIA / NEW ZEALAND / UNITED KINGDOM

SALES ENQUIRIES 1800 007 175 HELPDESK.AU@FV.COM.AU



WWW.FV.COM.AU